

# Summary

## Unregulated and Groundwater Diversions 2023/24

The Goulburn-Murray Water region spans from the high country at the top of the Mitta Mitta River catchment to Nyah in the north-west of Victoria. Covering 68,000 square kilometres across seven major river basins, the region provides water to over 25,000 customers.

The catchments rivers and streams are classified as either regulated or unregulated, where the unregulated sections are not managed through infrastructure along the waterway, such as weirs and regulating structures.

This project focuses on data collation and mapping on the unregulated waterways and groundwater extraction. Being the first year data has been captured for this area, it builds the basis for understanding of how land and water use is changing across the region into the future. The data captured is the area of Take and Use Licences (TUL), water use and industry type across the seven river basins.

The industry types are consistent with the Regulated Diversion project and the GMID project, as shown below.

The “other” category covers a range of land use types from public land, National Parks, and the University of Melbourne Dookie Campus.

With land use continuing to change in light of changing water availability and other social, environmental and economic factors, regularly capturing data will assist in decision making, for both land use and water use, as well as industry types.

Figure 1 shows the Take and Use Licences for unregulated diversions and groundwater extraction across the 7 river basins in the GMW Region.

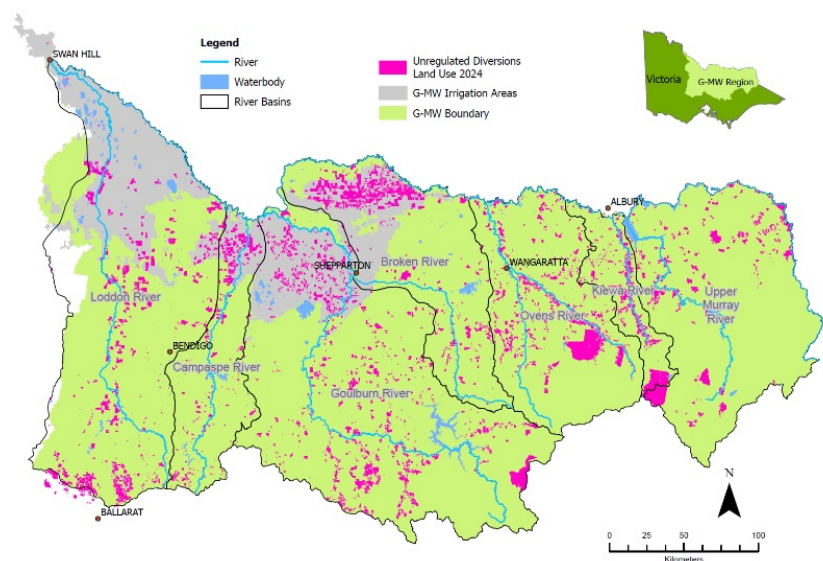
### River Basins

The GMW region encompasses seven river basins:

- Broken River
- Campaspe River
- Goulburn River
- Kiewa River
- Loddon River
- Ovens River
- Upper Murray

A separate fact sheet has been developed for each river basin.

**FIGURE 1: TAKE AND USE LICENCES FOR UNREGULATED DIVERSIONS ACROSS THE GMW REGION 2023/24**



### INDUSTRY TYPES:

											
Cropping	Dairy (Combined)	Energy	Glasshouse Plant / Vegetable	Horses	Horticulture Annual	Horticulture Perennial	Intensive Animals	Livestock Non Dairy	Rural Lifestyle/ Residential	Other	Not Irrigated

## Results 2023/24

The results of the inaugural data collection provides an excellent basis to build on into the future.

The area covered by TUL is 533,896 ha (this does not indicate the area irrigated which may be only a small proportion of the area covered by the licence). There was just over 103 gigalitres (GL) water diverted from the unregulated rivers, streams and groundwater for 2023/24 and there were 6,599 TUL. Table 1 provides a summary of data across the region by industry type.

**TABLE 1: SUMMARY OF AREA, WATER USE AND TAKE AND USE LICENCES**

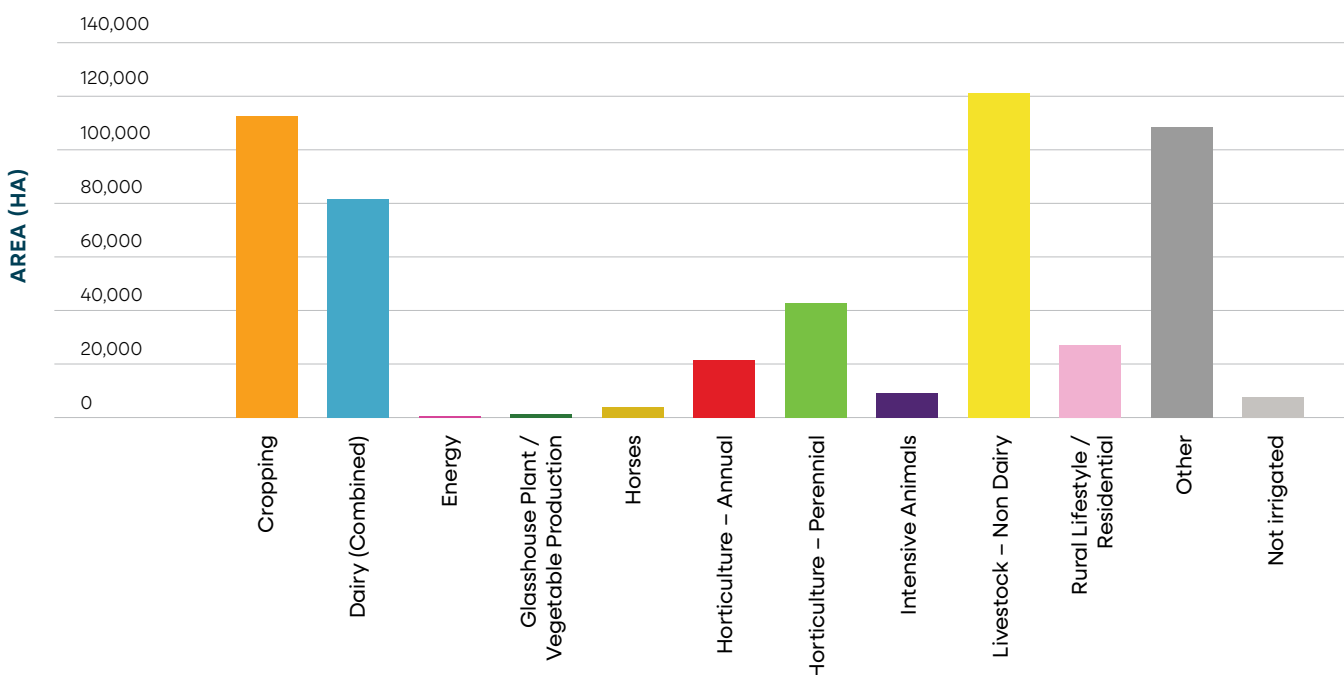
LAND USE	AREA (ha)	WATER USAGE (ML)	TAKE AND USE LICENCES
Cropping	113,445	40,065	851
Dairy (Combined)	79,761	22,324	746
Energy	57	—	1
Glasshouse Plant/Vegetable Production	1,327	334	31
Horses	2,888	122	34
Horticulture – Annual	22,998	9,446	246
Horticulture – Perennial	40,867	6,065	623
Intensive Animals	10,030	943	81
Livestock – Non Dairy	120,465	10,813	1,364
Rural Lifestyle/Residential	26,604	4,881	2,036
Other	107,393	7,816	474
Not irrigated	8,061	330	112
<b>TOTAL</b>	<b>533,896</b>	<b>103,137</b>	<b>6,599</b>

Please note: Licence area represents the parcels of land / title to which the licenced is attached and not the irrigation footprint.

### Area (ha)

The total area covered by TUL's by the Unregulated diversions and Groundwater users was 533,896 ha, with Cropping and Livestock – Non Dairy, representing 44% of this area. Figure 2 shows the area covered by TUL's based on industry type.

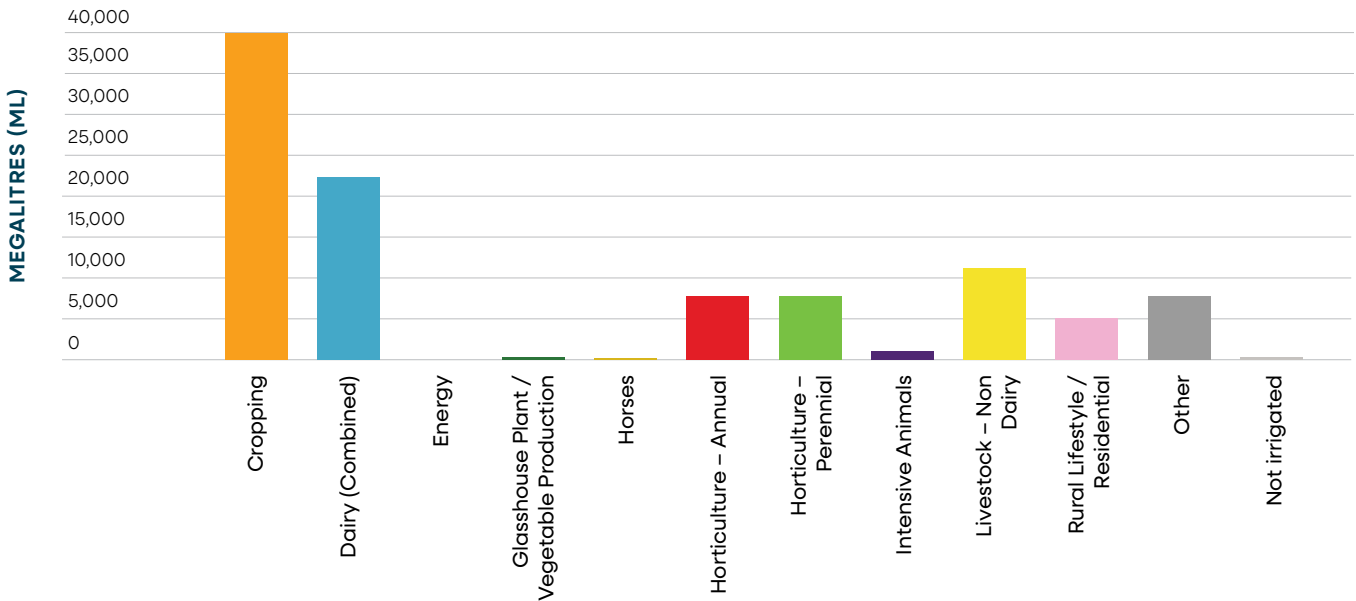
**FIGURE 2: LAND USE (HA) FOR UNREGULATED DIVERTERS BY INDUSTRY**



## Water use (ML)

The total water used for the Unregulated diversions and groundwater users was just over 103 gigalitres (GL), with Cropping and Dairy (Combined) enterprises using most of the water, representing 60% of the total water used.

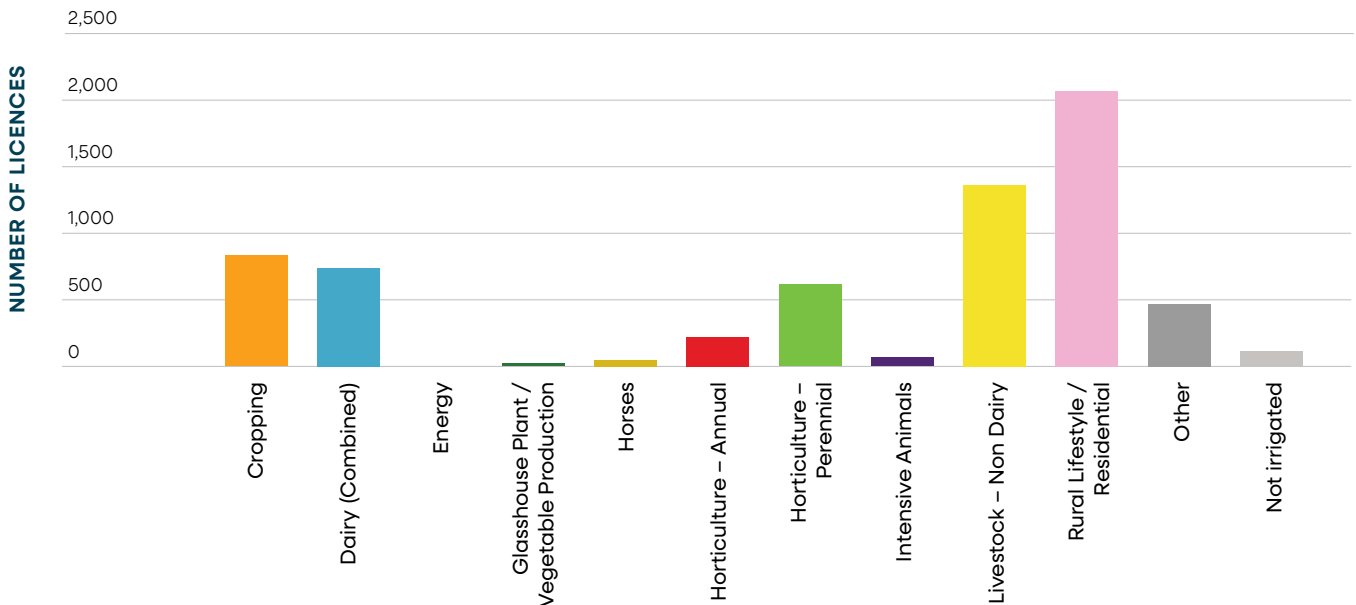
**FIGURE 3: WATER USED (ML) BY UNREGULATED DIVERTERS BY INDUSTRY**



## Take and Use Licences

The total number of TUL for the Unregulated diversions and Groundwater used was 6,599. Rural lifestyle/ Residential and Livestock – Non Dairy represented 53% of TUL holders.

**FIGURE 4: TAKE AND USE LICENCES (NO.) FOR UNREGULATED DIVERTERS BY INDUSTRY**



## Further Information

Further information on the Unregulated Diversions land use mapping project can be found at:

[Land and Water Use Mapping – GB CMA](#) and [Regional Irrigated Land and Water Use Mapping Program](#)

### Factsheet 1/8

Land and Water Use Mapping  
Unregulated Diversions 2023/24



This project is delivered and funded by partnerships between Department of Environment, Energy and Climate Action, Agriculture Victoria, Goulburn Broken, North East and North Central Catchment Management Authorities, Goulburn-Murray Water and Murray Dairy. These organisations do not guarantee that the publication is without flaw of any kind or is wholly appropriate for your particular purpose and therefore disclaim all liability for error, loss or other consequence which may arise from relying on this publication's information.